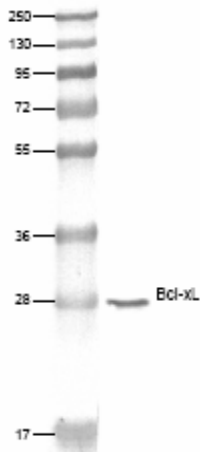


Monoclonal Mouse Antibody to bcl-X (Apoptosis Marker)

Catalog No.:	Mob 248, Mob 248-05
Applications:	Analyte Specific Reagent. Analytical and Performance characteristics are not established. Optimal working conditions must be determined by the end user.
Immunogen:	BALB/C mice were injected with a synthetic peptide of amino acid 3-14 (Cys-QSNRELVVDFLS) of human bcl-X protein.
Clone:	2H12
Isotype:	IgG2a
Format:	This antibody is supplied as purified immunoglobulin fraction containing sodium azide as a preservative.
Specificity:	This antibody recognizes a 27 kD protein identified as bcl-XL protein. It is highly specific to bcl-X and does not show cross reactivity with bcl-2 alpha or bax protein. This antibody cross reacts with human, mouse, rat, and pig.
Cellular Localization:	Cytoplasmic and cell membrane
Storage:	Store at 2-8°C. Do not use beyond the expiration date stated on the label.
References	:i) Hsu et al. J Biol. Sci. 272: 13829, 1997. ii) Hsu et al. Proc Natl Acad Sci. USA 94: 3668, 1997. iii) Wolter et al. J Cell Biol. 139: 1281, 1997.

KDa Protein Ladder



Western blot analysis of Human lung cell extract with Bcl-xL, (Mob 248) Antibody

ASR: Analyte Specific Reagent

DBS will not be held responsible for patent infringement or other violation that may occur with the use of our product

DBS

1020 Serpentine Lane, # 114, Pleasanton, CA 94566 Tel: 925 484 3350, Fax: 925 484 3390

Website: www.dbiosys.com e-mail: customersupport@dbiosys.com