

Monoclonal Mouse Antibody to Human bcl-2 Oncoprotein

Catalog #'s: Mob 005, Mob 005-05

Intended Use: This product is intended for qualitative immunohistochemistry with normal and neoplastic formalin-fixed, paraffin-embedded tissue sections, to be viewed by light microscopy. Clinical interpretation of staining results should be accompanied by histological studies with proper controls. Patients' clinical histories and other relevant diagnostic tests should be utilized by a qualified person(s) when evaluating and interpreting results.

Immunogen: Recombinant bcl-2 peptide sequence comprising of 51-54 amino acids of bcl-2 oncoprotein.

Clone: 124

Isotype: IgG1, Kappa

Format: This antibody is supplied as tissue culture supernatant containing sodium azide as a preservative.

Titer/Working Dilution: This antibody may be diluted to a titer of 1:15-1:50 in an ABC method. The final dilution should be determined by the user based upon the staining conditions employed.

Immuno-Staining: We suggest an incubation period of 30 minutes at room temperature. Optimal incubation conditions should be determined by the user based upon the fixation conditions and staining system employed. High temperature antigen unmasking with 10mM EDTA, pH 8.0 is required prior to immunostaining of formalin fixed paraffin embedded tissue sections.

Positive Control: Tonsil

Cellular Localization: Cell membrane

Other Applications: Western Blotting (1:100-750)

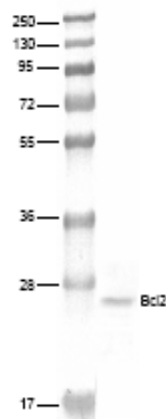
Specificity: This antibody is specific to bcl-2 oncoprotein, encoded by a gene involved in the 14; 18 chromosomal translocation. In lymphoid tissues, this antibody stains B-lymphocytes and T cells.

Storage: Store at 2-8°C. Do not use beyond the expiration date stated on the label.

References:

- i) Tsujimoto et al. Proc Natl Acad Sci (USA) 83: 5214, 1986.
- ii) Clearly et al. cell 47: 19, 1986.
- iii) Hockenbery et al. Nature 348: 334, 1990.
- iv) Swanson et al. Applied Immunohistochemistry 1: 182, 1993.

KDa, Protein Ladder



Western blot analysis of human lung cell extract with Bcl2, (Mob 005) Antibody.

IVD: For In Vitro Diagnostic Use

DBS will not be held responsible for patent infringement or other violation that may occur with the use of our product

DBS

1020 Serpentine Lane, # 114, Pleasanton, CA 94566 Tel: 925 484 3350, Fax: 925 484 3390

Website: www.dbiosys.com e-mail: customersupport@dbiosys.com